

# THE LAST MATCH

Sean W  
© 1991

♩ = 171  
♩ 3

Piano

Fmin 7 A<sup>b</sup>min 7 BΔ7

Drums

dr

Cmin 7 Fmin 7 EΔ7

Fmin 7 Amin 7 B/E

r

ride

MED  
SWING

PAR

h.b.o

8va ↓ b 0

RMS

# THE LAST MATCH

## Directions for performance.

BASS The bass player (electric preferred) should 'walk' the

the changes spelled out in the piano part. It is expected that these will be used for any solos also. In bars 21 → he should play roots only following the rhythm of the piano L.H. and the Bass drum. All min 7th chords employ dorian sounds except when altered.

PIANO The piano player is free to comp with his left hand following the chords indicated, except where otherwise expressed (e.g. bar 12)

SOME SUGGESTED VOICINGS:

F-7 (sum  $A^b-7$  etc)  $A+7 \rightarrow B\Delta 7 (\#5)$

Voicing I: F-7 (sum  $A^b-7$  etc)

Voicing II: A-7 (+7, +11) 4 voicings

Voicing III: A-7 (+7, +11) 4 voicings

Voicing IV: BΔ7 (#5)

DRUMS Patterns can be altered if desired, for example

can be played as a 'grab'

I have notated the kit as follows

ride or crash cymbals  
closed hi-hat  
snare

bass drum

CHORDS SYMBOLS USED: I had trouble naming a couple of chords so here are the scales that I expect to be used for voicings, solos etc.

A-7 (+7, +11)

$G^b \text{ min } 7 / D^b = F^\# \text{ min } 7 / C^\#$

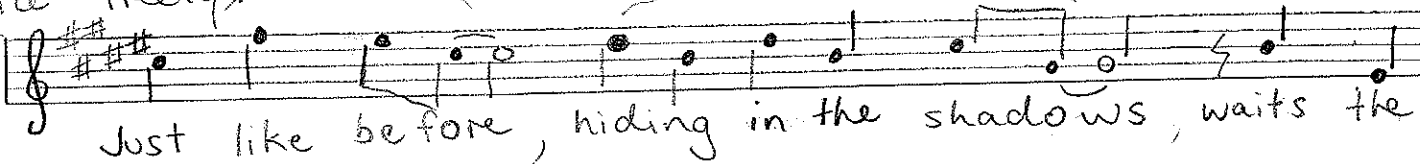
• • • • •

• • • • • 6th mode of E

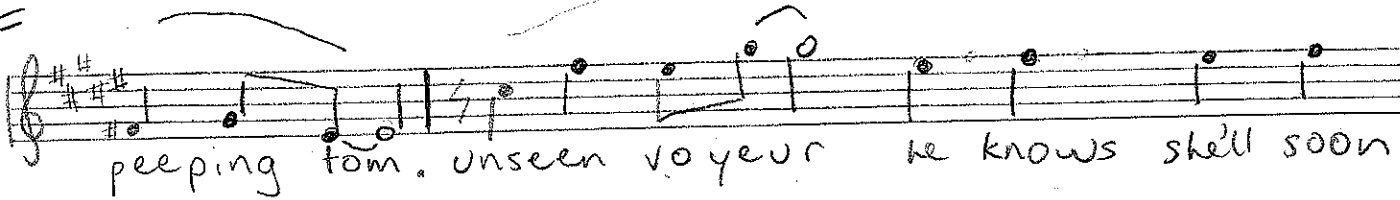
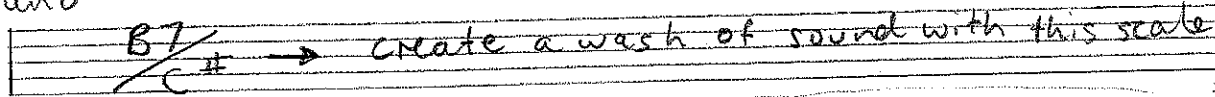
# PEEPING TOM

Sean wa  
© 1990

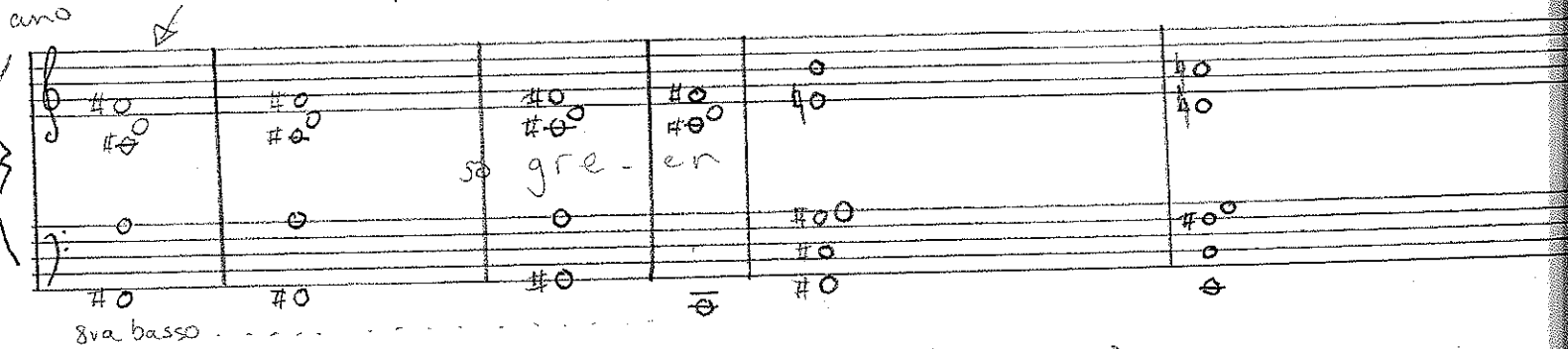
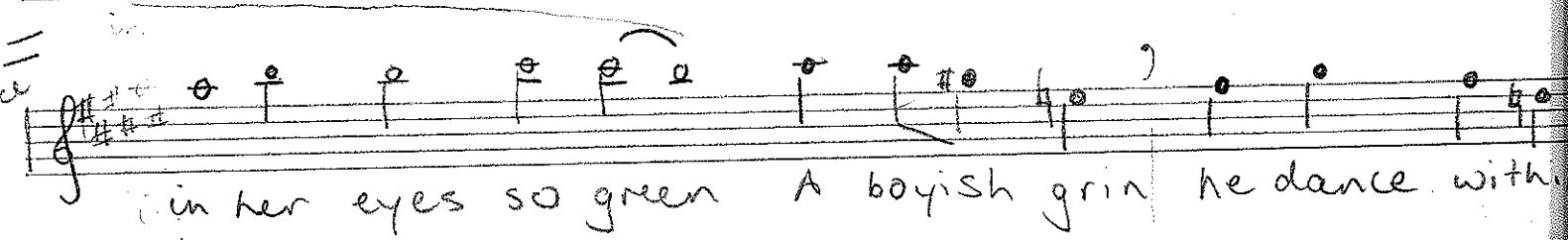
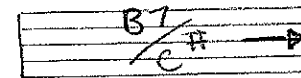
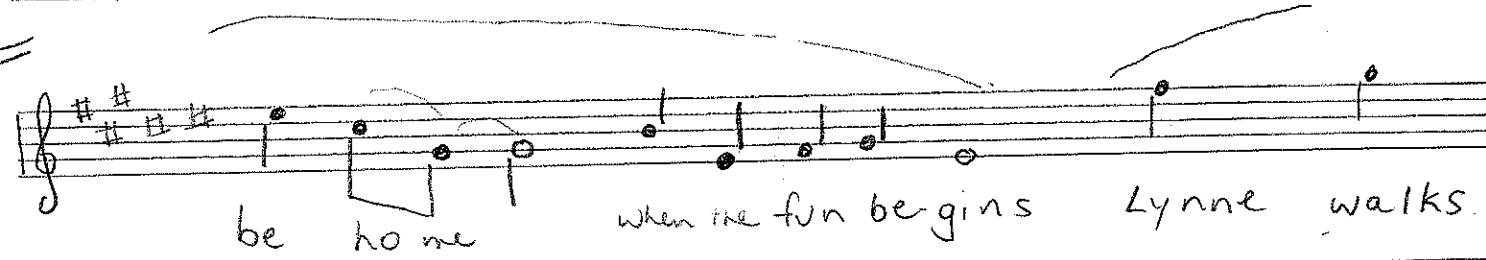
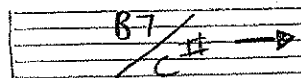
ca freely



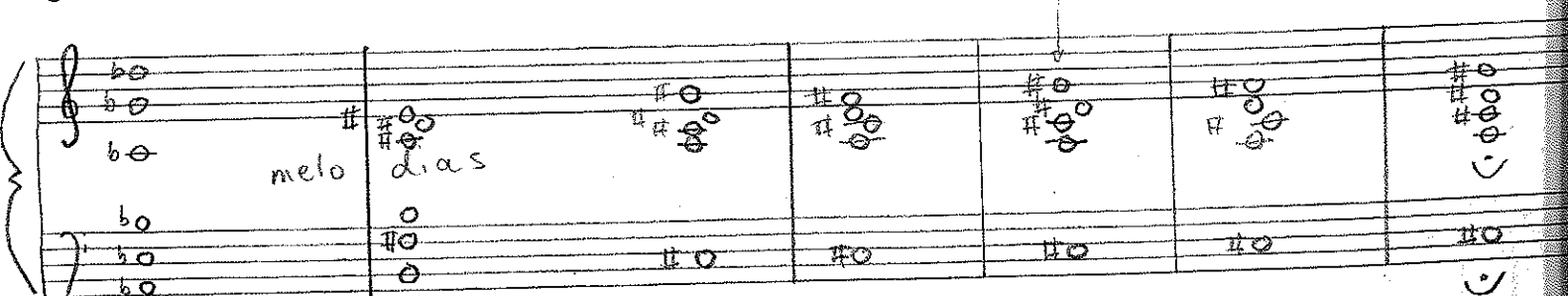
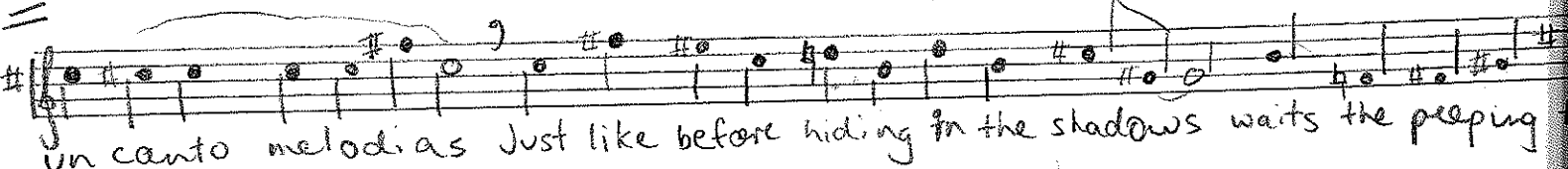
and



and



8va basso



New tempo  $d =$   
Guitar

play four bars of bass and drum feel as

Handwritten musical notation for guitar, staff 1, measures 1-4. The key signature has three sharps (F#, C#, G#). The notation includes eighth and quarter notes, with a triplet of eighth notes in measure 4.

Piano  $\rightarrow$  8va  $\uparrow$

Handwritten musical notation for piano, staff 1, measures 1-4. The notation includes eighth and quarter notes, with a triplet of eighth notes in measure 4. A bracket groups measures 2 and 3, with the text "B7/C#  $\rightarrow$ " written above it.

suggested voicings

Bass (8va  $\downarrow$ )

Handwritten musical notation for bass, staff 1, measures 1-4. The notation includes eighth and quarter notes, with a triplet of eighth notes in measure 4.

Drums

Handwritten musical notation for drums, staff 1, measures 1-4. The notation includes eighth and quarter notes, with a triplet of eighth notes in measure 4. The text "hi hat", "snare", and "b.d." are written above the staff. A note with a "Y" above it is marked "very light snare hit", and a note with an "X" above it is marked "hard snare hit".

Guitar with piano 8va drums and bass repeat 1st 4 bars.

Handwritten musical notation for guitar, staff 2, measures 1-4. The notation includes eighth and quarter notes, with a triplet of eighth notes in measure 4. The text "B7/C#  $\rightarrow$ " and "87/C#  $\rightarrow$ " are written above the staff.

smile.

Handwritten musical notation for guitar, staff 3, measures 1-4. The notation includes eighth and quarter notes, with a triplet of eighth notes in measure 4.

B7/C# guitar

Handwritten musical notation for guitar, staff 4, measures 1-4. The notation includes eighth and quarter notes, with a triplet of eighth notes in measure 4. The text "with piano 8va  $\uparrow$ " is written above the staff.

Just

guitar

Handwritten musical notation for guitar, staff 5, measures 1-4. The notation includes eighth and quarter notes, with a triplet of eighth notes in measure 4.

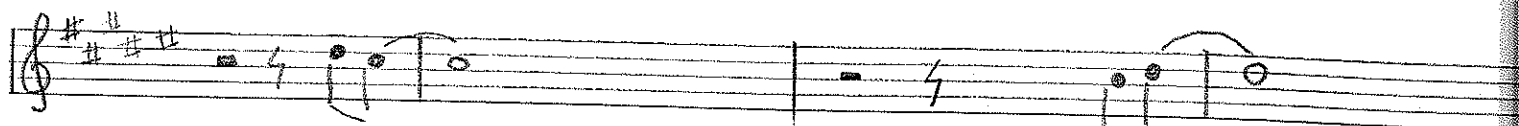
piano

Handwritten musical notation for piano, staff 2, measures 1-4. The notation includes eighth and quarter notes, with a triplet of eighth notes in measure 4. The text "piano" is written above the staff.

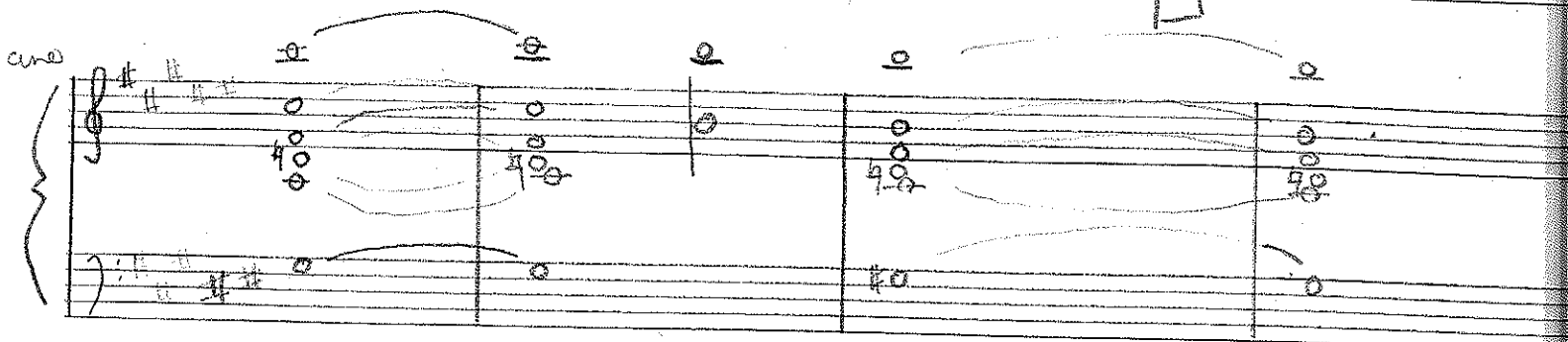
bass

Handwritten musical notation for bass, staff 2, measures 1-4. The notation includes eighth and quarter notes, with a triplet of eighth notes in measure 4.

guitar

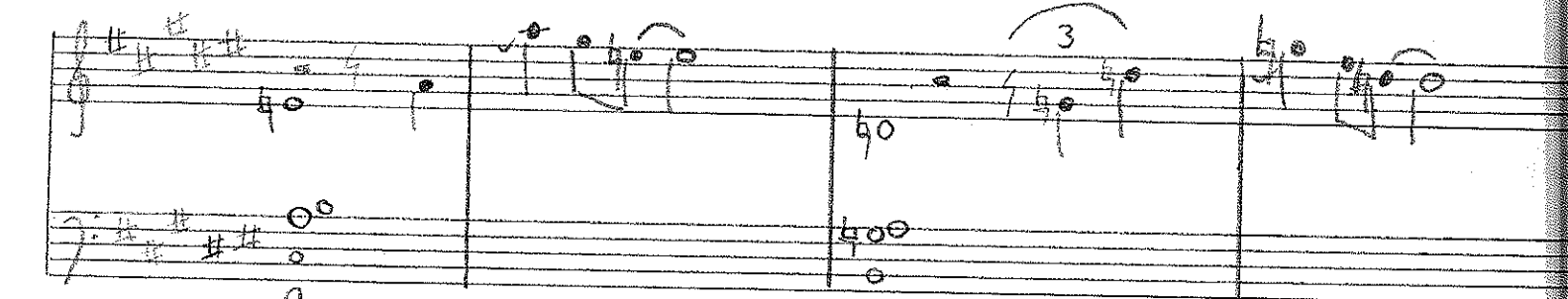
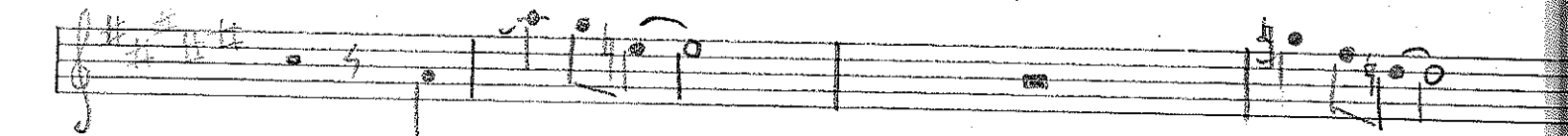


uno



ass

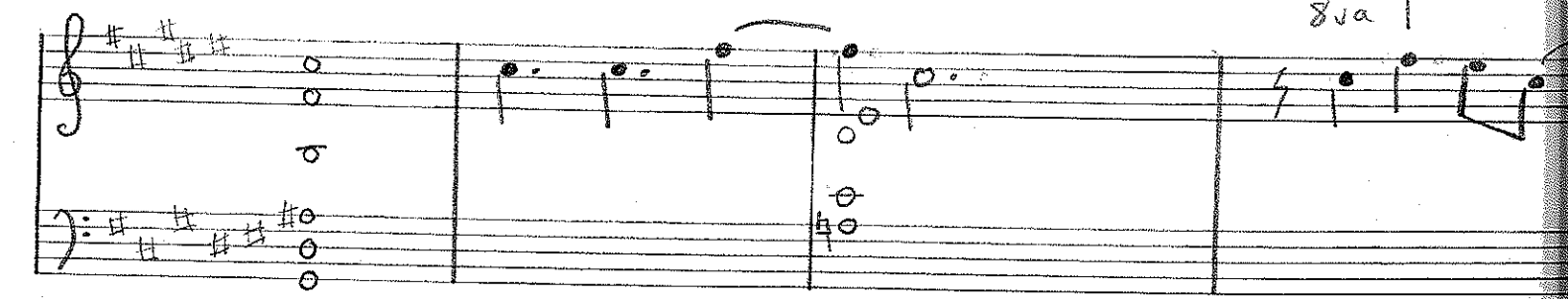
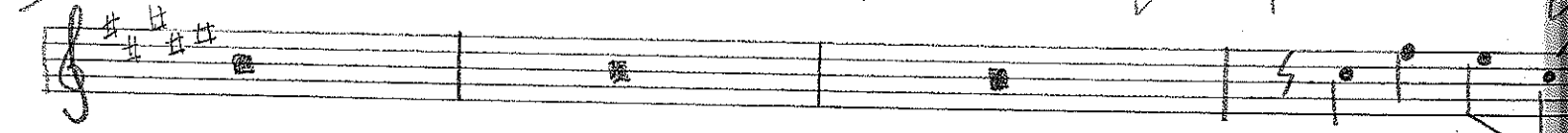
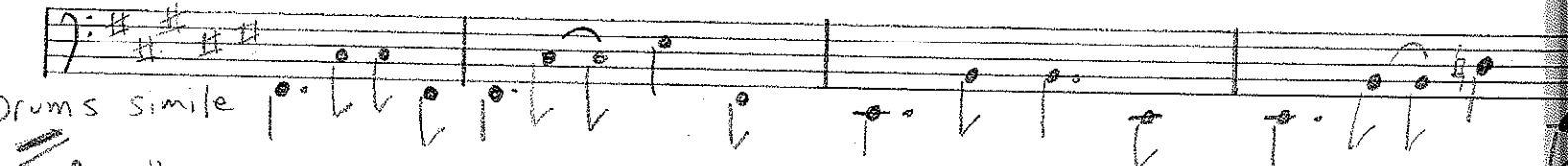
Drums simile



ped

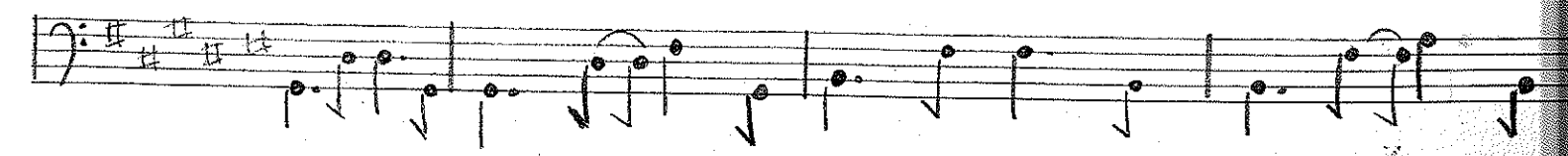
ped

Drums simile



ped

8va ↑



Handwritten musical notation for the first system, featuring a treble clef staff with a key signature of three sharps (F#, C#, G#) and a 4/4 time signature. The notation includes eighth notes, quarter notes, and triplet markings (3). A dashed line with an upward arrow and the text "8va ↑" indicates an octave shift. Below the staff, the instruction "play tune octave up, not chords" is written. The bass staff shows a simple bass line with whole notes.

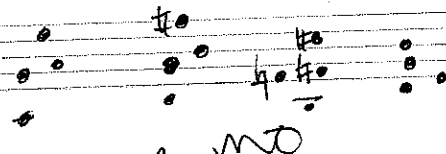
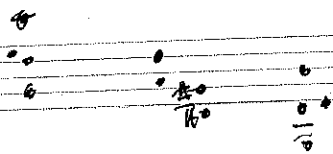
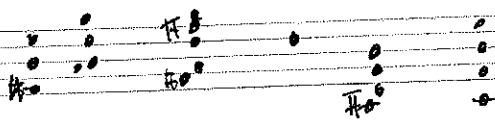
Bass & Drums play original vamp

Handwritten musical notation for the second system, continuing the melody from the first system. It includes triplet markings and an "8va ↑" instruction. The bass staff continues with whole notes.

32 bars		SOLOS		2 bars		2 bars		fine	
B7 / C#		B-7 / #F		B-7 / #G		B-7 / C#			
2 bars		2 bars		2 bars		2 bars			
F#-7		E-11		A6-11		B7			

(First 16 bars of new tempo are all  $\frac{B7}{C\#}$ )  
 play lead (new tempo) after solos  
 repeat bass & drum vamp for ending





BUT NOT FOR MO

2 1

$B^b \Delta 7$

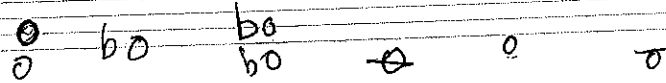
$F^{\#} \Delta 7$

$A 7 / E$

$D \Delta$

$B^b 7$

$E^b / B^b$



$b o$

$B^b 7$

$2$   $B^b - E^b$

$A^b \Delta 7$

$A^b - D^b$

$E^b \Delta 7$

$(C 7)$

$C -$

$F 7$

$F - 7$

$B^b 7$

$B^b \Delta 7$   $D^b 7$   $B \Delta 7$

